

ESSAY

Tissue-based class control: the other side of tolerance

Polly Matzinger and Tirumalai Kamala

Abstract | In this Essay, we offer a new perspective on how immune responses are regulated. We do not cover how they are turned on and off, but focus instead on the second major aspect of an immune response: the control of effector class. Although it is generally thought that the class of an immune response is tailored to fit the invading pathogen, we suggest here that it is primarily tailored to fit the tissue in which the response occurs. To this end, we cover such topics as the nature of T helper (T_H) cell subsets (current and yet to be discovered), the nature of privileged sites, the difference between oral tolerance and oral vaccination, why the route of immunization matters, whether the T_H1 -type response is really the immune system's primary defense, and whether there might be a different role for some regulatory T cells.

When confronted with a potential threat, the immune system faces two decisions: first, whether to respond or not, and second, what kind of response to make. The first decision has fascinated immunologists for decades, sparking several theories and much experimental work, most of which rests on the assumption that the immune system responds to 'foreign' antigens, and that maintaining self tolerance is a matter of controlling autoreactive T and B cells. But dealing with autoreactive lymphocytes is only half of the problem. Even in the absence of any autoreactivity, the wrong immune effector class can completely destroy a tissue¹⁻⁵.

The control of effector class, however, has had little theoretical input. Students generally learn that the immune system matches the effector class to the pathogen that it is fighting (for example, making IgE against worms, and cytotoxic T lymphocytes (CTLs) against viruses and intracellular bacteria). But it is not easy to see how the immune system could discriminate between worms, viruses or intracellular versus extracellular bacteria, as T cell receptors bind peptide-MHC complexes; B cell receptors bind small epitopes on proteins, carbohydrates and lipids that are present in most living

organisms; and the 'innate' receptors, such as the Toll-like receptors (TLRs) and NOD-like receptors (NLRs), are so promiscuous that they don't distinguish between ligands from different phyla, or between pathogen-derived and self-derived alarm signals⁶⁻⁹. Although current data suggest that TLR5 and NOD2 (nucleotide-binding oligomerization domain protein 2) may be fairly specific, it would be difficult to use even these receptors to make decisions about effector class. NOD2 does not distinguish between intracellular and extracellular bacteria, as it binds muramyl dipeptide, a component of almost all bacterial cell walls¹⁰. Similarly, TLR5 binds the flagella of both intracellular pathogens (such as *Listeria monocytogenes*) and extracellular pathogens (such as *Escherichia coli* and *Pseudomonas aeruginosa*)¹¹, whereas it does not bind the flagella of several other important pathogens (including *Helicobacter pylori*, *Staphylococcus aureus* and *Campylobacter jejuni*)¹¹.

So, what controls the effector class of an immune response? The idea that it might be the tissues, rather than the immune system, has grown slowly over the 13 years that we have been studying immunity from the perspective of the danger model^{12,13}. Initially,

the model did not offer any clues as to how one effector class might be chosen over another, as it was designed to cover only the immune system's first decision (whether to respond or not). It proposed that perturbed tissues initiate immune responses by sending alarm signals that activate local antigen-presenting cells (APCs), whereas healthy tissues display their own antigens or allow 'resting' APCs to display those antigens to induce peripheral tolerance. In effect, this model suggested that turning immune responses on or off was the prerogative of the tissues. It takes only a small step to suggest that tissues may also control the effector class, such that the class of an immune response is tailored to the tissue in which it occurs, rather than to the invading pathogen. The basics of this idea were outlined in two earlier articles^{12,14}. In this Essay, we describe the idea more fully, suggesting mechanisms by which tissues could carry out this function, describing some well-known immunological phenomena in light of this view, and pointing out the possibility that a complete definition of the immune system should perhaps include every tissue in the body.

Class and T helper cell subsets

Let us start by defining what we mean by immune effector class. Although the term "class" has historically been used to define different antibody isotypes (such as IgM and IgG), we prefer a definition that also includes the participating cells. Thus, each effector class combines a particular set of helper cells and the antibodies and effector cells that they promote. Currently, three main subclasses are generally accepted. T_H1 -type responses consist of T cells that produce interleukin-2 (IL-2), interferon- γ (IFN γ) and tumour necrosis factor (TNF), as well as B cells that make complement-fixing IgG antibodies, CTLs, activated natural killer (NK) cells and macrophages that produce free oxygen radicals. T_H2 -type responses consist of T cells that produce IL-4, IL-5, IL-13 and IL-10, B cells making IgE and IgG1, macrophages that express arginase, and the influx of eosinophils. T_H17 -type responses consist of T cells that produce IL-17 and the influx of neutrophils.

However, there have long been clues that this is an oversimplification. Human T cells, for example, often show non-classical cytokine expression patterns, and it took a long time to persuade researchers working with human cells to adopt the T_H1 - and T_H2 -type classifications. In mice, Kelso¹⁵ found that micromanipulated single T cells do not stably make T_H1 - or T_H2 -type cytokine ‘cassettes’. She suggested that the T_H1 - and T_H2 -type patterns are only the extremes of a multidimensional continuum; that individual T cells normally make only a small number of stochastically produced cytokines; and that populations of T cells can diversify to produce any number of different cytokine combinations. More recently, O’Shea and Paul¹⁶ proposed a somewhat similar scenario, but these views are far from universal. For example, Pulendran’s and Oppenheim’s groups found that dendritic cells (DCs) stimulated by *Porphyromonas gingivalis*-derived lipopolysaccharide (LPS)¹⁷ or by eosinophil-derived neurotoxin¹⁸ induce T_H cells that secrete IL-5 but not IL-4 (the signature T_H2 -type cytokine). In addition, Prussin and colleagues¹⁹ found two different subsets of T_H cells in atopic patients, some of which produce IL-5 but not IL-4. Nevertheless, rather than postulate the existence of a T_H cell that did not fit into the standard categories, all of these authors called these IL-5-producing cells ‘ T_H2 cells’.

We believe it is time to follow Kelso’s lead and stop forcing various kinds of immune responses into a few common categories. Although the T_H1/T_H2 paradigm has been useful in establishing the concept that different sorts of T_H cells promote different classes of

response, it has limited our ability to recognize the potentially enormous diversity of immune responses. If we were to stop consigning T_H cells to a small group of numbered subsets, but instead name them by what they produce (as is done for T_H17 cells) or by the responses they promote (as is done for follicular helper T cells), we would uncover the possibility that there are a large number of differentiation paths that T_H cells can take. We would suggest that each particular effector cell (such as each type of B cell, CTL, NK cell, macrophage, eosinophil, neutrophil and basophil) is controlled by a particular set of secreted and membrane-bound signals (from T_H cells and from other sources) and can be combined with any other effector cell to make a wide variety of carefully tailored immune responses.

Given the existence of such a variety of effectors, and the T_H cells that facilitate them, what determines the ultimate effector combination that arises in any particular immune response? We were drawn to the possibility that this is the responsibility of the tissues by two old immunological phenomena: immune-privileged sites and oral tolerance.

Immune-privileged sites

Immune-privileged sites are organs in which allogeneic transplants are not rejected. Neonatal hearts, for example, are rejected when transplanted under the skin or kidney capsules of adult recipients²⁰, but survive indefinitely if placed into the anterior chamber of the eye²¹, the brain²¹, the testes²² or the hamster cheek pouch²³. These observations are generally interpreted as evidence that ‘privileged’ sites exclude²⁴, disable²⁵ or suppress²⁶ immune cells.

There is, however, a world of difference between data and interpretations. The interpretation that immunity cannot occur in privileged sites makes little evolutionary sense. These tissues are wet, warm and full of nutrients. Without protection by the immune system, wouldn’t they promptly be exploited by pathogens? Luckily, other interpretations exist. Streilein’s work on the eye reveals a much more interesting picture.

The eye is a complex tissue, containing delicate specialized cells that cannot survive a full-blown T_H1 -type or delayed-type hypersensitivity (DTH) response. It protects itself by a process Streilein called ‘anterior chamber-associated immune deviation’²⁷, in which cells lining the anterior chamber secrete cytokines — transforming growth factor- β (TGF β), vasoactive intestinal peptide (VIP) and α -melanocyte stimulating hormone (α MSH) — that suppress T_H1 -type and DTH responses and increase the activity of regulatory T (T_{Reg}) cells²⁸ (TABLE 1).

Although this appears to be immune suppression, a closer look suggests something different. TGF β , VIP and α MSH all promote IgA production^{29–32}, but IgA cannot reject a transplant. So if we measure ocular immunity only by transplant rejection, and ignore the perfectly functional IgA response, we call it ‘tolerance’, ‘deviation’, ‘suppression’ or ‘regulation’. But this is none of those things. It is simply a class of response that protects the eye without destroying it.

The cells of the eye also express FAS ligand (also known as CD95L), which can trigger T cells through surface FAS (also known as CD95) to die by apoptosis²⁵. Although initially interpreted as evidence that lymphocytes entering the eye are eliminated, newer evidence that T_H1 cells express more FAS than T_H2 cells³³ suggests that the eye ‘chooses’ what kinds of T_H cells it allows or excludes. We predict that the other privileged sites also exert similar control over the local class of immune response.

Oral tolerance and oral vaccination

Oral tolerance has been extensively studied in experimental autoimmune encephalomyelitis. This is an experimental system in which an animal that is immunized with a strong adjuvant plus a brain-derived protein, such as myelin basic protein (MBP), acquires an autoimmune disease mediated by T_H1 -type, T_H17 -type and DTH responses³⁴ that somewhat resembles multiple sclerosis in humans. Feeding the animal MBP prior to MBP immunization prevents disease and reduces T cell responses^{35,36}. The T cells no longer proliferate in response to MBP or make IFN γ

Table 1 | Cytokines that tailor immune effector class in the eye and gut

Cytokine	DTH or T_H1 -type response	T_{Reg} cell induction	IgA production
<i>In the eye</i>			
TGF β	↓ ¹⁴⁰	↑ ¹⁴¹	↑ ^{29,30}
VIP	↓ ¹⁴²	↑ ¹⁴³	↑ ^{31,32}
α MSH	↓ ¹⁴⁴	↑ ¹⁴⁵	?
<i>In the gut*</i>			
TGF β	↓ ¹⁴⁰	↑ ¹⁴¹	↑ ^{29,30}
VIP	↓ ¹⁴²	↑ ¹⁴³	↑ ^{31,32}
TSLP	↓	↑ ¹⁴⁶	↑ ^{147†}
Vitamin A (retinoic acid)	↓ ^{148,149}	↑ ^{119,150,151}	↑ ⁵⁷

DTH, delayed-type hypersensitivity; α MSH, α -melanocyte stimulating hormone; TGF β , transforming growth factor- β ; T_{Reg} , regulatory T; TSLP, thymic stromal lymphopoietin; VIP, vasoactive intestinal peptide. *There are other molecules secreted by gut epithelial cells (such as APRIL (a proliferation-inducing ligand; also known as TNFSF13) and BAFF (B cell-activating factor; also known as TNFSF13B) that are not as well studied but which are likely also to influence the class of the immune response. †TSLP promotes IgA indirectly by promoting APRIL and interleukin-10 production.

or TNF and, when transferred into another mouse, these T cells suppress the recipient's autoimmune response. The interpretation of these results, that orally administered antigen generates tolerance and T_{H2}^{Reg} cells, has spurred a novel treatment for allergy known as sublingual immunotherapy³⁷, in which patients apply small amounts of allergen sublingually each day.

But what about oral vaccination, which can elicit protective immunity against poliovirus in humans³⁸ and against rabies virus in raccoons and coyotes³⁹? What is the difference between oral vaccination and oral tolerance? In many cases, very little. Oral administration of antigen in mice elicits at least three different kinds of response. When given in large doses, it can induce systemic deletional tolerance^{40,41} (presumably because enough antigen leaks into the circulation to be presented by resting DCs), as well as a local IgA response⁴². The addition of various adjuvants converts this into a systemic response that includes CTLs and IgG⁴³.

Lower doses of antigen can lead to the activation of T_{H3} cells that produce IL-4, IL-5, IL-10 and TGF β and promote the production of IgA^{42,44}. Because the T_{H3} cells can suppress inflammatory mechanisms through their secretion of IL-10 and TGF β , and because the presence of IgA is rarely assessed, this type of response is also often labelled as tolerance. But this is not tolerance. It is simply a switch to an immune response that is appropriate for the intestinal environment.

How does the gut promote the IgA response? Intestinal epithelial cells express TLRs⁴⁵ and secrete cytokines⁴⁶ (TABLE 1). Some of these cytokines (including TGF β and VIP) are similar to those produced in the eye, others (such as thymic stromal lymphopoietin (TSLP)) are unique to the gut, and some factors (such as vitamins A and D) are acquired in the diet and modified for use. All of these factors shape the immune response (TABLE 1). For example, TGF β , TSLP, vitamin A and vitamin D have been shown to suppress T_{H1} -type and DTH responses and promote the production of IgA. Thus, the gut seems to promote the antibody subclass (IgA) that is locally most useful, while simultaneously preventing destructive T_{H1} -type and DTH responses.

Tissue-appropriate immunity

Why would a tissue suppress DTH and T_{H1} -type responses? Why not make many different effector classes to ensure pathogen clearance? The reason is that these mechanisms are terribly destructive. TNF and IFN γ induce cell death^{47,48}; IL-17 recruits

Box 1 | Class control by organs, tissues or regions?

Is it organs or tissues that control the immune response? On the one hand, one could argue that the function of each organ dictates that it should encourage particular types of response and discourage others. But are organs homogeneous in their needs? For example, the skin has a barrier function that may require certain types of immune functions, but the dermis and epidermis are not the same. They have different populations of antigen-presenting cells (APCs) and might promote different immune response classes. The jejunum and ileum, although comprising parts of the small intestine, have their own subsets of microflora and may need somewhat different types of immune protection. Even within these intestinal regions, the epithelial microenvironments are different. In the villus crypts, where most epithelial cell division occurs and where bacterial infection would be particularly hazardous, Paneth cells produce large amounts of antimicrobial peptides. Further up the villus, the epithelial cells take on more of their own protection, expressing Toll-like receptors and producing different types of bactericidal molecules.

One could argue, then, that each cell type has the ability to produce immune protective and immune-modulating signals, and that this implies that control of the immune response lies at the level of the cell. However, the same cell type might behave differently in different organs. For example, the vascular endothelium is unlikely to be the same in the lungs, liver, heart, skin and kidneys. Will it communicate differently in those different sites with the cells of the immune system?

At the moment we don't have answers to these questions. We don't know what comprises a minimum tissue 'unit' that communicates with the immune system. For that reason, we use the word "tissue" to define a local mixture of tissue cells that communicate with each other and with the bone marrow-derived cells that constitute the rest of the immune system. In some cases, a local tissue might also communicate systemically with other tissues to help define the initiation, longevity and effector class of an immune response.

neutrophils; CTLs and NK cells kill target cells directly or through antibody-dependent cell-mediated cytotoxicity^{49,50}; macrophages release oxygen radicals⁵¹; and complement drills holes in cell membranes⁵². These are devastating weapons!

The eye and gut are not alone in being susceptible to damage by these powerful responses. Each organ is made of an intricate combination of tissues (BOX 1), precisely tuned to perform particular functions that can easily be compromised by destructive effector mechanisms. For example, strong T_{H1} -type responses can destroy the placenta^{1,53}, pancreatic islets³, skin¹, eye⁴, brain⁵⁴ and small intestine². So most tissues are likely to have mechanisms to avoid such destruction while promoting appropriate local immunity.

How might tissues communicate their preferences to local and circulating cells of the immune system? First, the local tissue can produce (or modify) cytokines, chemokines and other communicating molecules (for example, antimicrobial peptides such as LL37 (REF 55); neuroactive molecules such as VIP and noradrenaline⁵⁶; or vitamins such as vitamins A⁵⁷ and D⁵⁸). These factors can influence tissue-resident APCs to promote a certain effector class (or classes) while discouraging others. They can also affect the entry and exit of innate and adaptive immune cells, and govern what these cells do in the local environment. For example, fluid from the eye's anterior chamber can induce peritoneal macrophages to suppress

DTH responses⁵⁹ and enhance T_{H2} -type responses⁶⁰. In the gut, TGF β acts as a switch factor that induces B cells to produce IgA⁶¹, and vitamin D helps to recruit T_{H2} cells rather than T_{H1} cells by promoting the production of CC-chemokine ligand 22 (CCL22)⁶², which recruits CC-chemokine receptor 4 (CCR4)⁺ T_{H2} cells⁶³. In the skin, locally produced vitamin D can suppress local DTH responses⁶⁴.

Second, many tissues have resident T cells that respond to stress-induced self molecules rather than foreign antigens. The gut has intraepithelial $\alpha\beta$ T cells⁶⁵ and $\gamma\delta$ T cells⁶⁶, as well as mucosa-associated invariant T (MAIT) cells⁶⁷. These cells respond to the stress-induced self molecules RAE1 (retinoic acid early-inducible protein 1) and MR1 (MHC class I related) in mice, and to MICA (MHC class I polypeptide-related sequence A), MICB and MR1 in humans⁶⁸. Similarly, up to 40% of liver-resident T cells are NKT cells that recognize several lipid molecules presented by the stress-induced antigen-presenting glycoprotein CD1d⁶⁹. Mouse and cattle skin contains dendritic epidermal $\gamma\delta$ T cells (DETCs), which respond to RAE1 (REF 70) and help to heal the skin by making keratinocyte growth factor⁷¹, IL-2 and IFN γ ⁷². The purpose of these tissue-resident cells seems to be to survey the tissues they reside in for signs of stress and to maintain the health of these tissues. The cells may achieve this by making molecules that are important for healing and/or by producing cytokines (and probably

chemokines, endogenous danger signals and neuropeptides) that promote the class of immune response appropriate for that tissue at that time.

Third, neuronal signals may contribute to tissue-specific class control. Neuropeptides can influence effector class⁷³, and many leukocytes express neuropeptide receptors that were previously thought to be restricted to the nervous system^{74–78}. Overall, tissues seem to have multiple ways of communicating with the immune system and promoting appropriate local immune functions. We assume that each tissue has a particular set of effectors that it prefers. IgA, for example, is appropriate for the eye⁷⁹, the gut and other mucosal surfaces, but may not be the right effector for the brain, which would have its own preferred response class.

The three phases of an immune response

If T_H1-type, T_H17-type and DTH responses are so harmful, why have they evolved? One possibility is that tissues that regenerate easily (such as the skin and liver) can tolerate the damage, whereas others (including the eye, brain and pancreatic islets) might not. Thus, a DTH response in a non-regenerative tissue might be a case of the right action in the wrong place.

Another possibility is that DTH is the immunological counterpart of frostbite. On exposure to cold, capillaries dilate to keep extremities warm, but with intense cold or long exposure the capillaries constrict, causing loss of extremities while preserving core temperature. Perhaps the immune system's response is similarly biphasic. It first uses less destructive immune mechanisms to deal with adversity in a way that maintains the health of all tissues. But if that doesn't work, it switches to a second phase of destructive responses, sacrificing some tissues to preserve life.

In fact, there could be three phases. In phase one, the tissue summons innate cells for clean up and repair. If this isn't sufficient, it recruits the adaptive immune system, which attempts to clear the problem with a locally tailored effector class. And if that doesn't work, the tissue brings in the highly destructive T_H1-type, T_H17-type and DTH responses. DTH responses might destroy the eye while clearing an ocular infection⁸⁰, but they ensure that the individual survives. In the gut, DTH responses may cause temporary flattening of gut villi and result in diarrhoea, but villi regenerate quickly. And, although a T_H1-type response may cause a fetus to abort while clearing an infection, it saves the mother's life.

Nevertheless, such destruction is a tremendous price to pay for good health and should only be summoned when necessary. How does a tissue determine when to switch from one class of immune response to another?

Controlling the switch

When considering what might control the switch between the phases of an immune response, we begin with three assumptions. The first is that tissues 'educate' resident APCs (and incoming T and B cells) to promote certain types of immune response and suppress others^{81–86}. Although it has been suggested that there are many subsets of DCs because of the need to distinguish many different pathogens¹⁶, these subsets might also correlate with the different kinds of tissues that need protection (for example, Langerhans cells can be distinguished from dermal DCs in unperturbed skin). Furthermore, DCs remember their origins. DCs that migrate from the gut to mesenteric lymph nodes induce T cells to express gut-homing receptors (such as CCR9)⁸⁷ and produce cytokines (including IL-4, IL-10 and TGFβ) that suppress T_H1-type responses and promote IgA production^{41,61,81,88}, whereas DCs that leave damaged skin induce T cells to express skin-homing receptors (namely α4β1 integrin, CCR4 and CCR10)^{89,90}.

We predict that a thorough analysis will show that each tissue imparts specific instructions that result in different populations of T_H cells promoting different combinations of effectors, each appropriate for that particular injured or infected tissue. For example, three different T_H cell subsets protect three different organs: CD62L⁺ T cells protect islets from diabetes, CD25⁺ T cells protect the stomach from gastritis, and CD45RB^{low} T cells protect the gut from colitis⁹¹.

The instructions that tissues pass to T cells might be communicated through tissue-derived molecules, which could influence local or newly entering T cells directly or which could be transported to the T cells by APCs. Alternatively, the signals might be produced by APCs as a consequence of the education that they received from their local tissue. If antigen recognition delivers 'signal one' and co-stimulation delivers 'signal two', then tissue-influenced signals governing the ensuing effector class could be called 'signal three'.

The second assumption we make is that when signal three is absent, the default action is a T_H1-type or DTH response. If a tissue becomes so damaged that it cannot deliver APC-educating signals, the backup response

is probably necessary. This fits with the common findings that T cells stimulated by DCs generated without tissue-derived signals (such as DCs generated in plastic dishes) or by CD3-specific antibody tend to produce T_H0- or T_H1-type responses, whereas T cells stimulated by DCs from mesenteric lymph nodes or Peyer's patches produce IL-4, IL-10 and TGFβ^{88,92}. Thus, tissue-derived signals serve as checkpoints to prevent the destructive default backup response.

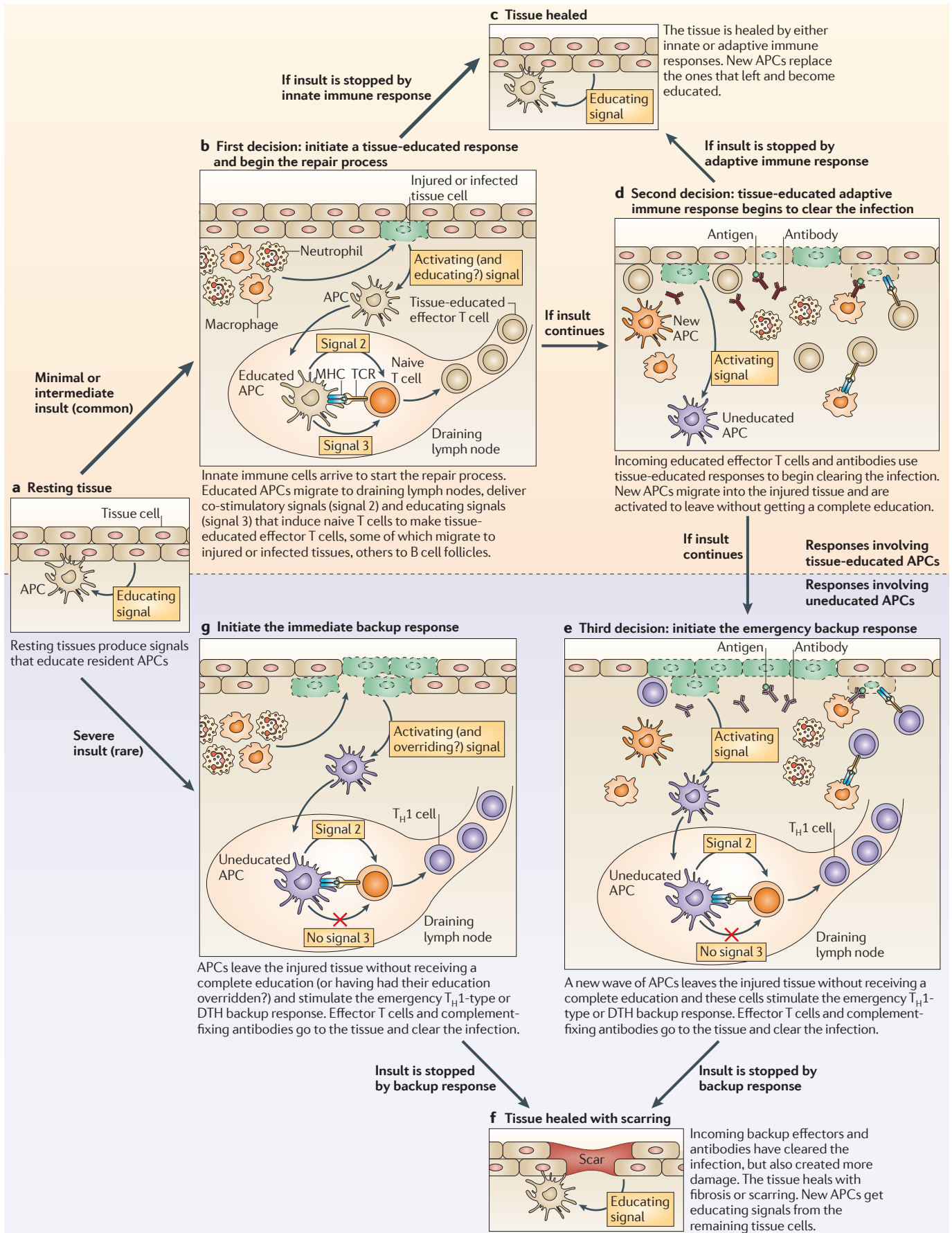
Third, we assume that APCs carrying tissue instructions to draining lymph nodes survive for a while and are then replaced by new APCs. Their experimentally deduced functional lifespans range from 3 days⁹³ to 3 weeks⁹⁴.

Given these assumptions, there are at least two non-exclusive possibilities for how tissues might manage the switch from locally tailored immune responses to destructive backup responses: one based on time, the other on signal strength.

Time-dependent class switch. When activated by exogenous or endogenous^{6,95,96} alarm signals, tissue-resident APCs migrate to the draining lymph nodes and are replaced by new APC precursors. If the immune

Figure 1 | A model for tissue-based class control of immune responses.

a | Resting tissues educate local antigen-presenting cells (APCs). **b** | Following an insult (such as an injury or infection), the APCs leave the tissue to stimulate naive T cells to make tissue-educated responses. **c** | If the innate immune response clears the infection (or injured tissue), the tissue heals and educates newly arriving APCs. An adaptive immune response is not needed and ceases. **d** | If the innate immune response does not stop the infection, then tissue-educated adaptive immune responses are initiated. If these clear the pathogen, then the tissue heals. **e** | If the tissue-educated adaptive immune response cannot resolve the infection, then a second wave of newly entering APCs will be activated in a local tissue environment that now contains more extensive damage. The new APCs may be properly educated or they may not be (because the high level of damage would result in fewer signals from the tissue). If not, they will leave the tissue and stimulate the emergency backup response. **f** | If the backup response clears the pathogen, then the tissue heals, but with some scarring or fibrosis occurring. **g** | If the initial insult is severe, the local APCs leave the tissue without receiving a complete education. This could be because the severely damaged tissues cannot provide the right signals or because the tissue provides signals that override the original education. These APCs launch the immediate backup response. DTH, delayed-type hypersensitivity; TCR, T cell receptor; T_H1, T helper 1.



response elicited by the original wave of tissue-resident APCs clears the infection, the new APC precursors that migrate to the healing or healed tissue will become the new resident tissue-educated APCs. If, however, the infection persists, this second wave of APCs may be activated before they are educated. When these uneducated APCs migrate to the draining lymphoid tissue, they will elicit the default backup T_H1 -type or DTH response. In this scenario, the backup mechanism occurs only because the initial tissue-oriented response has failed (FIG. 1).

Damage- or stimulus-dependent class switch. Under conditions of severe infection⁹⁷, cell stress or destruction⁸, or in the presence of noxious adjuvants²⁸, the local tissue may need to promote a strong backup response right from the start or may simply have difficulty sending educating signals. APCs migrating from the tissue without having had the proper final set of instructions will, therefore, induce the backup response. Later, when most of the infection has been cleared and the healing tissue is once again able to send educating signals, the response will revert to the tissue-oriented response⁹⁸. This might account for the occasional late appearance of less noxious responses⁹⁹ (FIG. 1).

These are not mutually exclusive scenarios. There might be situations in which memory T cells influence APCs after they arrive at the draining lymph node and counteract the tissue-derived instructions that the APCs arrived with. For example, T cells induced by oral immunization can enter popliteal lymph nodes and re-educate DCs to promote T_H2 - or T_H3 -type responses rather than T_H1 -type responses^{83,92}. There might be times when the signals that APCs receive through their innate receptors are so strong that they overcome the tissue-educating signals. There might also be positive or negative feedback loops. For example, DCs that promote T_H1 -type or DTH responses make IL-12, which stimulates NK cells. In turn, activated NK cells can rapidly kill activated DCs¹⁰⁰, ensuring that a T_H1 -type or DTH response doesn't last long. And when the damage gets too great, the resulting hypoxia can downregulate the destructive immune response and switch it to another class¹⁰¹.

What about the pathogens?

One could argue that the idea that tissues promote their own particular types of response, irrespective of the infecting agent, goes against a wealth of data supporting

the textbook consensus that the immune system tailors its responses to the pathogen (by initiating CTL responses to viruses and intracellular bacteria, and T_H2 -type responses to extracellular bacteria and worms)^{16,102}. However, the evidence is not as clear as the textbooks would like to us to believe.

First, the view that the immune system mobilizes CTLs to clear viruses and IgE to eliminate worms is rather oversimplified. Most viruses elicit antibody responses, and the isotypes vary with the infection site. Measles and rubella viruses, for example, inhabit the skin¹⁰³ and elicit mostly IgG1, IgG3 and IgG4 (REF. 104), but rotavirus and influenza virus, which inhabit the gut and the lungs, respectively, induce strong IgA responses¹⁰⁵ (which can be more important than CTLs for protection from reinfection¹⁰⁶). Unfortunately these local tissue responses are often missed, either because they simply aren't measured (for example, TGF β and secretory IgA are often left out of standard tests because they are difficult to measure) or because the relevant B and T cells home to distinctly local sites using specific chemokine receptors and adhesion molecules^{107,108}, and discharge their antibodies and cytokines into local secretions rather than serum¹⁰⁹.

“ Tissues are not simply passive recipients of immune protection ”

What about the idea that T_H2 -type responses are the best mechanism to clear helminths? In mice infected with schistosomes, treatment with antibody specific for IgE actually causes a reduction in worm burden¹¹⁰, and worm numbers do not differ between IL-4-deficient and wild-type mice¹¹¹. Furthermore, IL-4-deficient mice have lower burdens of *Onchocerca* microfilariae and greater resistance to reinfection than wild-type mice¹¹². In human studies, people living in *Schistosoma mansoni* endemic areas who remain clinically uninfected make strong IFN γ responses to worm antigens, whereas those who maintain chronic low worm burdens make IL-4 (REFS 113, 114). This suggests that an IFN γ -associated response clears the worms and prevents reinfection, whereas T_H2 cell functions instead allow the worms to establish low-level colonization and produce more worms without doing serious damage. One could ask,

therefore, if the IgE responses reported against worms might be due to instructions from the worm, rather than decisions by the immune system.

When studying immunity to a pathogen, it is not always clear whose agenda we are studying. Viruses are known to have evolved all sorts of mechanisms to subvert or modulate immune responses¹¹⁵, and we should not expect less from pathogens with larger and more complex genomes¹¹⁶. Their survival depends on it and they have had evolutionary time to devise the mechanisms. BOX 2 gives a few examples of the strategies used by parasites and worms to modulate immune responses in their favour.

The influence of history

If tissues and their resident immune cells tend to promote immune response classes other than the T_H1 -type or DTH response, why have immunologists thought of the T_H1 -type response as the 'normal' response for so long? This may be a historical accident. Before we had *in vitro* culture systems and other laboratory tools, there were two main ways of measuring cellular (as opposed to humoral) immunity: the tuberculosis skin DTH test and graft rejection. Later, as we developed *in vitro* correlates of such cellular immunity, we looked for components that were part of these responses. For example, we generated assays for CTLs and NK cells, for macrophages that produce oxygen radicals, for T cells that produce TNF and IFN γ , and for antibodies that fix complement. In other words, we measured things that kill! If anyone wondered why immune responses should be so destructive, they probably assumed that this is the only way to fight pathogens and that the collateral damage is simply the price we pay.

Because what we think influences what we do, we also geared our model systems to generate these responses. We found culture conditions to promote them *in vitro* and adjuvants that elicit them *in vivo* (is it any surprise that our 'best' adjuvant for cellular immunity, complete Freund's adjuvant, contains mycobacteria?). We named the CD4⁺ T cells that enhance them T_H1 cells, and when we discovered that IgE production and allergy seem to be driven by a different kind of helper cell, we named them T_H2 cells and called their suppressive effect on T_H1 cell responses 'immune deviation'. When we discovered that orally administered antigen elicits T_H3 cell responses, which involve T_H cells making TGF β and IL-10 and promoting IgA production, we

Box 2 | Class control by pathogens

Viruses are known to have a plethora of mechanisms to influence and/or avoid the immune system¹¹⁵. Other organisms have not been as extensively studied, but some data are beginning to emerge. Some pathogens might choose to reside in tissues that not only offer good shelter and nutrition, but that also promote an effector class that is unable to effectively clear that parasite. Pathogens can also generate their own immune-influencing signals to exploit host defense strategies to their advantage. *Leishmania* parasites are an example. Sandflies taking a blood meal on mammalian skin induce a typical wound healing response that summons 'alternatively activated' macrophages that express high levels of arginase¹³⁰. This is precisely what *Leishmania* parasites need: readily available macrophages that they can infect to start the next stage of their life cycle. How does the macrophage-associated arginase help in this process? Catabolism of arginine involves two enzymes that compete with each other. Inducible nitric oxide synthase (iNOS) generates nitric oxide, which effectively kills intracellular *Leishmania*, whereas arginase catabolizes arginine to ornithine, a precursor of essential nutrients for *Leishmania*¹³¹. *Leishmania* parasites influence events even more in their favour by inducing the sandfly to secrete promastigote secretory gel (PSG), a potent inducer of arginase-expressing macrophages¹³². The more parasites harboured by the sandfly, the more PSG in its midgut and the more it deposits in the skin when it bites. Thus, the process by which *Leishmania* are deposited into host skin during a natural infection induces precisely the responses that are most likely to maximize *Leishmania* survival and propagation, namely the migration to the site of infection of macrophages that synthesize the nutritional compounds that *Leishmania* require.

Mycobacteria also have immune-subverting effects. Recent studies¹³³ on early events in the establishment of mycobacterial infections have reversed long-standing assumptions about the purpose of the granuloma, one of the most ancient host defense strategies by which multicellular organisms wall off infectious agents and prevent their spread through the body¹³⁴. Surprisingly, granulomas form rapidly during infection with virulent mycobacteria and have greater levels of macrophage recruitment, motility and apoptosis than those that form during infection with non-virulent mycobacteria (which are poorly formed and result in attenuated infections). The result of the accelerated granuloma formation with virulent mycobacteria is early dissemination of the infection, through the release of infected macrophages from the primary granulomas and production of secondary granulomas at distal sites¹³³. Thus, the virulent mycobacterium converts an evolutionarily ancient form of host defense into a convenient and pliant tool that enables its survival and more efficient propagation.

*Bordetella bronchiseptica*¹³⁵, *Schistosoma mansoni*^{136–138} and *Fasciola hepatica*⁹ express molecules that promote T helper 2 cell responses, whereas Lewis antigen-expressing *Helicobacter pylori*¹³⁹ specifically block T helper 1 cell differentiation, presumably because such strategies work to their advantage. These strategies are likely to be only the tip of the iceberg, and we will find many more as we study the relationships between pathogens, commensals, symbionts and their hosts.

mostly ignored them, or focused instead on their ability to suppress the T_H1-type inflammatory response and called them T_R1 cells or T_{Reg} cells^{117–120}.

Although T_{Reg} cells were originally thought to be autoreactive T cells that are educated in the thymus¹²¹ to become suppressors^{122,123}, there are now known to be several subsets. There are natural and induced T_{Reg} cells, thymic and peripheral T_{Reg} cells and self-reactive and non-self-reactive T_{Reg} cells. There are T_{Reg} cells induced by culture in the absence of co-stimulatory molecules and those induced in the presence of co-inhibitory molecules or other molecules such as TGFβ, vitamin D, retinoic acid or antibodies specific for CD40 ligand. There are T_{Reg} cells that make TGFβ or IL-10 or neither. And there have been endless discussions about which ones are the 'real' T_{Reg} cells¹²⁴. We would suggest that many of these T_{Reg} cells are actually misunderstood memory helper T cells. In an unimmunized animal, they

will have been stimulated mostly by antigens entering through the nose, mouth and intestine. To help to promote appropriate responses for these mucosal tissues they may also need to suppress other classes of response. It would not be surprising, therefore, to discover that many CD25⁺ memory T_H cells from a normal mouse can suppress IFNγ or TNF production, graft rejection or CTL activity.

One might ask why our postulated helper activity of tissue-specific T_{Reg} cells has not been observed. The main reason is that T_{Reg} cells are not often tested for helper functions. More than 99% of the work on T_{Reg} cells uses assays that measure only their ability to suppress T_H1-type functions¹²⁵. If we don't measure the mucosal memory response, we will mistakenly call this tolerance, suppression or regulation. In fact, in two studies in which intestinal antibody production was measured, forkhead box P3 (FOXP3)⁺ cells were shown to become helper cells for the production of IgA^{126,127}.

We are all guilty of this. Out of all of the ways to evaluate immune responses, each laboratory tends to use only a small subset. So when we do something (such as feed antigen to animals, or add cytokines or antibodies to *in vitro* cultures) and notice that the immune response we are measuring decreases, we call it tolerance. Then when we transfer cells from that animal to another, or add them to other cells *in vitro*, and find that the recipient also fails to respond in our limited set of assays, we call it suppression. But we don't notice that, unobserved, another type of response is increasing. If, for example, we measured T_H2 cells only by their ability to suppress T_H1-type responses, we would miss their capacity to promote IgE and IgG1 production and their role in allergy and asthma. This is not really suppression, but a switch of effector class. Perhaps, if we were to begin measuring the helper functions of T_{Reg} cells, we might find a new range of tools to help us modulate immunity.

We suggest that it is time to discard the idea that the destructive T_H1-type or DTH response is the immune system's core mechanism. When someone tells us that the T_H1-type response is the "natural" response in their experimental system, we need to ask, "what adjuvant are you using, what dose of antigen are you using, where are you injecting it and what other responses are you missing?"

A few final thoughts

Although the body must clear some pathogens, or at least keep them in their place, our commensal microflora must also be maintained and our tissues kept healthy in the process. To accomplish this, the immune system does not use a set of rigidly defined T_H1, T_H2 or T_H17 cells, but a wide variety of T_H cells that respond to signals from their environment to mount a carefully balanced response to adversity. Some of these cells are tissue resident and some circulate. Some have genetically defined invariant T cell receptors, whereas others are somatically generated in each individual. Each of these T_H cells associates with various groups of B cells, macrophages, cytotoxic cells, neutrophils, eosinophils, basophils and tissue cells to tailor the response to the local milieu and the pathogen.

In fact, we should perhaps redefine the immune system to include every tissue in the body. Tissues are not simply passive recipients of immune protection, but are active participants in their own defense. They express TLRs^{128,129}. They produce antimicrobial peptides and antiviral cytokines,

such as type I IFNs. They produce 'eat me' signals to bring in scavenger cells, alarm signals to activate local APCs, class-influencing signals to modulate local immune responses and chemokines to recruit cells for repair, remodelling and immunity. Finally, they may potentially also transmit 'health' signals to send away all of these cells when they are no longer needed. To fully understand these complex interactions we will need to step back, have another look, start using assays that measure a wider array of immune functions, and embrace the complexity that we find.

Polly Matzinger and Tirumalai Kamala are at the Ghost Lab, Laboratory of Cellular and Molecular Immunology, T-Cell Tolerance and Memory Section, National Institute of Allergy and Infectious Diseases, National Institutes of Health, 9000 Rockville Pike, Bethesda, Maryland 20892, USA.

*Correspondence to P.M.
e-mail: pcm@helix.nih.gov*

doi:10.1038/nri2940

- Streilein, J. W. Pathologic lesions of GVH disease in hamsters: antigenic target versus 'innocent bystander'. *Prog. Exp. Tumor Res.* **16**, 396–408 (1972).
- Elson, C. O., Reilly, R. W. & Rosenberg, I. H. Small intestinal injury in the graft versus host reaction: an innocent bystander phenomenon. *Gastroenterology* **72**, 886–889 (1977).
- Krook, H. *et al.* A distinct Th1 immune response precedes the described Th2 response in islet xenograft rejection. *Diabetes* **51**, 79–86 (2002).
- Knisely, T. L., Luckenbach, M. W., Fischer, B. J. & Niederkorn, J. Y. Destructive and nondestructive patterns of immune rejection of syngeneic intraocular tumors. *J. Immunol.* **138**, 4515–4523 (1987).
- Abram, M. *et al.* Effects of pregnancy-associated *Listeria monocytogenes* infection: necrotizing hepatitis due to impaired maternal immune response and significantly increased abortion rate. *Virchows Arch.* **441**, 368–379 (2002).
- Seong, S. Y. & Matzinger, P. Hydrophobicity: an ancient damage-associated molecular pattern that initiates innate immune responses. *Nature Rev. Immunol.* **4**, 469–478 (2004).
- Kawai, T. & Akira, S. The role of pattern-recognition receptors in innate immunity: update on Toll-like receptors. *Nature Immunol.* **11**, 373–384 (2010).
- Zhang, Q. *et al.* Circulating mitochondrial DAMPs cause inflammatory responses to injury. *Nature* **464**, 104–107 (2010).
- Dowling, D. J. *et al.* Major secretory antigens of the helminth *Fasciola hepatica* activate a suppressive dendritic cell phenotype that attenuates Th17 cells but fails to activate Th2 immune responses. *Infect. Immun.* **78**, 793–801 (2010).
- Koch, A. L. Bacterial wall as target for attack: past, present, and future research. *Clin. Microbiol. Rev.* **16**, 673–687 (2003).
- Andersen-Nissen, E. *et al.* Evasion of Toll-like receptor 5 by flagellated bacteria. *Proc. Natl Acad. Sci. USA* **102**, 9247–9252 (2005).
- Matzinger, P. Tolerance, danger, and the extended family. *Annu. Rev. Immunol.* **12**, 991–1045 (1994).
- Matzinger, P. The danger model: a renewed sense of self. *Science* **296**, 301–305 (2002).
- Matzinger, P. Friendly and dangerous signals: is the tissue in control? *Nature Immunol.* **8**, 11–13 (2007).
- Kelso, A. Th1 and Th2 subsets: paradigms lost? *Immunol. Today* **16**, 374–379 (1995).
- O'Shea, J. J. & Paul, W. E. Mechanisms underlying lineage commitment and plasticity of helper CD4⁺ T cells. *Science* **327**, 1098–1102 (2010).
- Pulendran, B. *et al.* Lipopolysaccharides from distinct pathogens induce different classes of immune responses *in vivo*. *J. Immunol.* **167**, 5067–5076 (2001).
- Yang, D. *et al.* Eosinophil-derived neurotoxin acts as an alarmin to activate the TLR2–MyD88 signal pathway in dendritic cells and enhances Th2 immune responses. *J. Exp. Med.* **205**, 79–90 (2008).
- Prussin, C., Lee, J. & Foster, B. Eosinophilic gastrointestinal disease and peanut allergy are alternatively associated with IL-5⁺ and IL-5⁻ T_H2 responses. *J. Allergy Clin. Immunol.* **124**, 1326–1332 (2009).
- Hume, D. M. & Egdahl, R. H. Progressive destruction of renal homografts isolated from the regional lymphatics of the host. *Surgery* **38**, 194–214 (1955).
- Medawar, P. B. Immunity to homologous grafted skin: the fate of skin homografts transplanted to the brain, to subcutaneous tissue, and to the anterior chamber of the eye. *Br. J. Exp. Pathol.* **29**, 58–69 (1948).
- Barker, C. F. & Billingham, R. E. Immunologically privileged sites. *Adv. Immunol.* **25**, 1–54 (1977).
- Barker, C. F. & Billingham, R. E. The lymphatic status of hamster cheek pouch tissue in relation to its properties as a graft and as a graft site. *J. Exp. Med.* **133**, 620–639 (1971).
- Fijak, M. & Meinhardt, A. The testis in immune privilege. *Immunol. Rev.* **213**, 66–81 (2006).
- Ferguson, T. A. & Griffith, T. S. A vision of cell death: Fas ligand and immune privilege 10 years later. *Immunol. Rev.* **213**, 228–238 (2006).
- Caspi, R. R. Ocular autoimmunity: the price of privilege? *Immunol. Rev.* **213**, 23–35 (2006).
- Streilein, J. W. Ocular immune privilege: therapeutic opportunities from an experiment of nature. *Nature Rev. Immunol.* **3**, 879–889 (2003).
- Niederkorn, J. Y. & Stein-Streilein, J. History and physiology of immune privilege. *Ocul. Immunol. Inflamm.* **18**, 19–23 (2010).
- Coffman, R. L., Lebman, D. A. & Shrader, B. Transforming growth factor β specifically enhances IgA production by lipopolysaccharide-stimulated murine B lymphocytes. *J. Exp. Med.* **170**, 1039–1044 (1989).
- Sonoda, E. *et al.* Transforming growth factor β induces IgA production and acts additively with interleukin 5 for IgA production. *J. Exp. Med.* **170**, 1415–1420 (1989).
- Boirivant, M. *et al.* Vasoactive intestinal polypeptide modulates the *in vitro* immunoglobulin A production by intestinal lamina propria lymphocytes. *Gastroenterology* **106**, 576–582 (1994).
- Kimata, H. & Fujimoto, M. Vasoactive intestinal peptide specifically induces human IgA1 and IgA2 production. *Eur. J. Immunol.* **24**, 2262–2265 (1994).
- Fang, Y., Yu, S., Ellis, J. S., Sharav, T. & Braley-Mullen, H. Comparison of sensitivity of Th1, Th2, and Th17 cells to Fas-mediated apoptosis. *J. Leukoc. Biol.* **87**, 1019–1028 (2010).
- Shinohara, M. L., Kim, J. H., Garcia, V. A. & Cantor, H. Engagement of the type I interferon receptor on dendritic cells inhibits T helper 17 cell development: role of intracellular osteopontin. *Immunity* **29**, 68–78 (2008).
- Khoury, S. J., Hancock, W. W. & Weiner, H. L. Oral tolerance to myelin basic protein and natural recovery from experimental autoimmune encephalomyelitis are associated with downregulation of inflammatory cytokines and differential upregulation of transforming growth factor β , interleukin 4, and prostaglandin E expression in the brain. *J. Exp. Med.* **176**, 1355–1364 (1992).
- Miller, A., Lider, O., Roberts, A. B., Sporn, M. B. & Weiner, H. L. Suppressor T cells generated by oral tolerization to myelin basic protein suppress both *in vitro* and *in vivo* immune responses by the release of transforming growth factor β after antigen-specific triggering. *Proc. Natl Acad. Sci. USA* **89**, 421–425 (1992).
- Scadding, G. & Durham, S. Mechanisms of sublingual immunotherapy. *J. Asthma* **46**, 322–334 (2009).
- Salk, D. & Salk, J. Vaccinology of poliomyelitis. *Vaccine* **2**, 59–74 (1984).
- Stern, R. T., Meltzer, M. I., Shwiff, S. A. & Slate, D. Tactics and economics of wildlife oral rabies vaccination, Canada and the United States. *Emerg. Infect. Dis.* **15**, 1176–1184 (2009).
- Chen, Y. *et al.* Peripheral deletion of antigen-reactive T cells in oral tolerance. *Nature* **376**, 177–180 (1995).
- Alpan, O., Rudomen, G. & Matzinger, P. The role of dendritic cells, B cells, and M cells in gut-oriented immune responses. *J. Immunol.* **166**, 4843–4852 (2001).
- Mestecky, J., Russell, M. W. & Elson, C. O. Perspectives on mucosal vaccines: is mucosal tolerance a barrier? *J. Immunol.* **179**, 5633–5638 (2007).
- Maloy, K. J., Donachie, A. M., O'Hagan, D. T. & Mowat, A. M. Induction of mucosal and systemic immune responses by immunization with ovalbumin entrapped in poly(lactide-co-glycolide) microparticles. *Immunology* **81**, 661–667 (1994).
- Weiner, H. L. Induction and mechanism of action of transforming growth factor- β -secreting Th3 regulatory cells. *Immunol. Rev.* **182**, 207–214 (2001).
- Abreu, M. T. Toll-like receptor signalling in the intestinal epithelium: how bacterial recognition shapes intestinal function. *Nature Rev. Immunol.* **10**, 131–144 (2010).
- Kaplan, H. J. & Niederkorn, J. Y. Regional immunity and immune privilege. *Chem. Immunol. Allergy* **92**, 11–26 (2007).
- Boehm, U., Klamp, T., Groot, M. & Howard, J. C. Cellular responses to interferon- γ . *Annu. Rev. Immunol.* **15**, 749–795 (1997).
- Tracey, K. J. & Cerami, A. Tumor necrosis factor: a pleiotropic cytokine and therapeutic target. *Annu. Rev. Med.* **45**, 491–503 (1994).
- Kagi, D., Ledermann, B., Burki, K., Zinkernagel, R. M. & Hengartner, H. Molecular mechanisms of lymphocyte-mediated cytotoxicity and their role in immunological protection and pathogenesis *in vivo*. *Annu. Rev. Immunol.* **14**, 207–232 (1996).
- Mukaidea, N. Antibody-dependent cell-mediated cytotoxicity (ADCC). *Nippon Rinsho* **57** (Suppl.), 571–573 (1999).
- MacMicking, J., Xie, Q. W. & Nathan, C. Nitric oxide and macrophage function. *Annu. Rev. Immunol.* **15**, 323–350 (1997).
- Carroll, M. C. The role of complement and complement receptors in induction and regulation of immunity. *Annu. Rev. Immunol.* **16**, 545–568 (1998).
- Chaouat, G. *et al.* T_H1/T_H2 paradigm in pregnancy: paradigm lost? *Int. Arch. Allergy Immunol.* **134**, 93–119 (2004).
- Linthicum, D. S., Mackay, I. R. & Carnegie, P. R. Measurement of cell-mediated inflammation in experimental murine autoimmune encephalomyelitis by radioisotopic labeling. *J. Immunol.* **123**, 1799–1805 (1979).
- Gilliet, M. & Lande, R. Antimicrobial peptides and self-DNA in autoimmune skin inflammation. *Curr. Opin. Immunol.* **20**, 401–407 (2008).
- Nijhuis, L. E., Olivier, B. J. & de Jonge, W. J. Neurogenic regulation of dendritic cells in the intestine. *Biochem. Pharmacol.* **80**, 2002–2008 (2010).
- Tokuyama, H. & Tokuyama, Y. Retinoids enhance IgA production by lipopolysaccharide-stimulated murine spleen cells. *Cell. Immunol.* **150**, 353–363 (1993).
- Baeke, F., Takiishi, T., Korf, H., Gysemans, C. & Mathieu, C. Vitamin D: modulator of the immune system. *Curr. Opin. Pharmacol.* **10**, 482–496 (2010).
- Wilbanks, G. A., Mammolenti, M. & Streilein, J. W. Studies on the induction of anterior chamber-associated immune deviation (ACAID) III. Induction of ACAID depends upon intraocular transforming growth factor- β . *Eur. J. Immunol.* **22**, 165–173 (1992).
- Kosiewicz, M. M., Alard, P. & Streilein, J. W. Alterations in cytokine production following intraocular injection of soluble protein antigen: impairment in IFN- γ and induction of TGF- β and IL-4 production. *J. Immunol.* **161**, 5382–5390 (1998).
- Stavnezer, J. & Kang, J. The surprising discovery that TGF β specifically induces the IgA class switch. *J. Immunol.* **182**, 5–7 (2009).
- Penna, G. *et al.* 1,25-Dihydroxyvitamin D3 selectively modulates tolerogenic properties in myeloid but not plasmacytoid dendritic cells. *J. Immunol.* **178**, 145–153 (2007).
- Imai, T. *et al.* Selective recruitment of CCR4-bearing Th2 cells toward antigen-presenting cells by the CC chemokines thymus and activation-regulated chemokine and macrophage-derived chemokine. *Int. Immunol.* **11**, 81–88 (1999).
- Lemire, J. M. & Adams, J. S. 1,25-Dihydroxyvitamin D3 inhibits the passive transfer of cellular immunity by a myelin basic protein-specific T cell clone. *J. Bone Miner. Res.* **7**, 171–177 (1992).
- Cheroutre, H. & Lambolez, F. The thymus chapter in the life of gut-specific intra epithelial lymphocytes. *Curr. Opin. Immunol.* **20**, 185–191 (2008).

66. Groh, V., Steinle, A., Bauer, S. & Spies, T. Recognition of stress-induced MHC molecules by intestinal epithelial $\gamma\delta$ T cells. *Science* **279**, 1737–1740 (1998).
67. Treiner, E. *et al.* Selection of evolutionarily conserved mucosal-associated invariant T cells by MRI. *Nature* **422**, 164–169 (2003).
68. Hue, S. *et al.* A direct role for NKG2D/MICA interaction in villous atrophy during celiac disease. *Immunity* **21**, 367–377 (2004).
69. Bendelac, A., Savage, P. B. & Teyton, L. The biology of NKT cells. *Annu. Rev. Immunol.* **25**, 297–336 (2007).
70. Jameson, J. & Havran, W. L. Skin $\gamma\delta$ T-cell functions in homeostasis and wound healing. *Immunol. Rev.* **215**, 114–122 (2007).
71. Boismenu, R. & Havran, W. L. Modulation of epithelial cell growth by intraepithelial $\gamma\delta$ T cells. *Science* **266**, 1253–1255 (1994).
72. Boismenu, R., Hobbs, M. V., Boullier, S. & Havran, W. L. Molecular and cellular biology of dendritic epidermal T cells. *Semin. Immunol.* **8**, 323–331 (1996).
73. Braun, A., Wiebe, P., Pfeufer, A., Gessner, R. & Renz, H. Differential modulation of human immunoglobulin isotype production by the neuropeptides substance P, NKA and NKB. *J. Neuroimmunol.* **97**, 43–50 (1999).
74. Dunzendorfer, S. & Wiedermann, C. J. Neuropeptides and the immune system: focus on dendritic cells. *Crit. Rev. Immunol.* **21**, 525–557 (2001).
75. Ho, W. Z., Lai, J. P., Zhu, X. H., Uvaydova, M. & Douglas, S. D. Human monocytes and macrophages express substance P and neurokinin-1 receptor. *J. Immunol.* **159**, 5654–5660 (1997).
76. Lai, J. P., Douglas, S. D. & Ho, W. Z. Human lymphocytes express substance P and its receptor. *J. Neuroimmunol.* **86**, 80–86 (1998).
77. Qian, B. F., Zhou, C. Q., Hammarstrom, M. L. & Danielsson, A. Both substance P and its receptor are expressed in mouse intestinal T lymphocytes. *Neuroendocrinology* **73**, 358–368 (2001).
78. Shibata, M., Hisajima, T., Nakano, M., Goris, R. C. & Funakoshi, K. Morphological relationships between peptidergic nerve fibers and immunoglobulin A-producing lymphocytes in the mouse intestine. *Brain Behav. Immun.* **22**, 158–166 (2008).
79. Meek, B., Speijer, D., de Jong, P. T., de Smet, M. D. & Peek, R. The ocular humoral immune response in health and disease. *Prog. Retin. Eye Res.* **22**, 391–415 (2003).
80. Lausch, R. N., Monteiro, C., Kleinschrodt, W. R. & Oakes, J. E. Superiority of antibody versus delayed hypersensitivity in clearance of HSV-1 from eye. *Invest. Ophthalmol. Vis. Sci.* **28**, 565–570 (1987).
81. Everson, M. P. *et al.* Dendritic cells from different tissues induce production of different T cell cytokine profiles. *J. Leukoc. Biol.* **59**, 494–498 (1996).
82. Bode, U. *et al.* Dendritic cell subsets in lymph nodes are characterized by the specific draining area and influence the phenotype and fate of primed T cells. *Immunology* **123**, 480–490 (2008).
83. Iliiev, I. D., Mileti, E., Matteoli, G., Chiappa, M. & Rescigno, M. Intestinal epithelial cells promote colitis-protective regulatory T-cell differentiation through dendritic cell conditioning. *Mucosal Immunol.* **2**, 340–350 (2009).
84. Rimoldi, M. *et al.* Intestinal immune homeostasis is regulated by the crosstalk between epithelial cells and dendritic cells. *Nature Immunol.* **6**, 507–514 (2005).
85. Xia, S. *et al.* Hepatic microenvironment programs hematopoietic progenitor differentiation into regulatory dendritic cells, maintaining liver tolerance. *Blood* **112**, 3175–3185 (2008).
86. Zeuthen, L. H., Fink, L. N. & Frokiaer, H. Epithelial cells prime the immune response to an array of gut-derived commensals towards a tolerogenic phenotype through distinct actions of thymic stromal lymphopoietin and transforming growth factor- β . *Immunology* **123**, 197–208 (2008).
87. Kunkel, E. J. *et al.* Lymphocyte CC chemokine receptor 9 and epithelial thymus-expressed chemokine (TECK) expression distinguish the small intestinal immune compartment: epithelial expression of tissue-specific chemokines as an organizing principle in regional immunity. *J. Exp. Med.* **192**, 761–768 (2000).
88. Iwasaki, A. & Kelsall, B. L. Freshly isolated Peyer's patch, but not spleen, dendritic cells produce interleukin 10 and induce the differentiation of T helper type 2 cells. *J. Exp. Med.* **190**, 229–239 (1999).
89. Mora, J. R. *et al.* Reciprocal and dynamic control of CD8 T cell homing by dendritic cells from skin- and gut-associated lymphoid tissues. *J. Exp. Med.* **201**, 303–316 (2005).
90. Calzascia, T. *et al.* Homing phenotypes of tumor-specific CD8 T cells are predetermined at the tumor site by crosspresenting APCs. *Immunity* **22**, 175–184 (2005).
91. Alyanekian, M. A. *et al.* Diversity of regulatory CD4⁺ T cells controlling distinct organ-specific autoimmune diseases. *Proc. Natl Acad. Sci. USA* **100**, 15806–15811 (2003).
92. Alpan, O., Bachelder, E., Isil, E., Arnheiter, H. & Matzinger, P. 'Educated' dendritic cells act as messengers from memory to naive T helper cells. *Nature Immunol.* **5**, 615–622 (2004).
93. De Smedt, T. *et al.* Antigen-specific T lymphocytes regulate lipopolysaccharide-induced apoptosis of dendritic cells *in vivo*. *J. Immunol.* **161**, 4476–4479 (1998).
94. Helft, J. *et al.* Antigen-specific T-T interactions regulate CD4 T-cell expansion. *Blood* **112**, 1249–1258 (2008).
95. Martinon, F., Mayor, A. & Tschopp, J. The inflammasomes: guardians of the body. *Annu. Rev. Immunol.* **27**, 229–265 (2009).
96. Yu, L., Wang, L. & Chen, S. Endogenous Toll-like receptor ligands and their biological significance. *J. Cell. Mol. Med.* **14**, 2592–2603 (2010).
97. Eisenbarth, S. C. *et al.* Lipopolysaccharide-enhanced, Toll-like receptor 4-dependent T helper cell type 2 responses to inhaled antigen. *J. Exp. Med.* **196**, 1645–1651 (2002).
98. Belkaid, Y. The role of CD4⁺CD25⁺ regulatory T cells in Leishmania infection. *Expert Opin. Biol. Ther.* **3**, 875–885 (2003).
99. Jankovic, D. *et al.* Conventional Tbet⁺Foxp3⁻ Th1 cells are the major source of host-protective regulatory IL-10 during intracellular protozoan infection. *J. Exp. Med.* **204**, 273–283 (2007).
100. Shah, P. D., Gilbertson, S. M. & Rowley, D. A. Dendritic cells that have interacted with antigen are targets for natural killer cells. *J. Exp. Med.* **162**, 625–636 (1985).
101. Sitkovsky, M. & Lukashev, D. Regulation of immune cells by local-tissue oxygen tension: HIF1 α and adenosine receptors. *Nature Rev. Immunol.* **5**, 712–721 (2005).
102. Pulendran, B., Palucka, K. & Banchereau, J. Sensing pathogens and tuning immune responses. *Science* **293**, 253–256 (2001).
103. Takahashi, H. *et al.* Detection and comparison of viral antigens in measles and rubella rashes. *Clin. Infect. Dis.* **22**, 36–39 (1996).
104. Isa, M. B. *et al.* Comparison of immunoglobulin G subclass profiles induced by measles virus in vaccinated and naturally infected individuals. *Clin. Diagn. Lab. Immunol.* **9**, 693–697 (2002).
105. Gonzalez, R., Franco, M., Sarmiento, L., Romero, M. & Schael, I. P. Serum IgA levels induced by rotavirus natural infection, but not following immunization with the RRV-TV vaccine (Rotashield), correlate with protection. *J. Med. Virol.* **76**, 608–612 (2005).
106. Liew, F. Y., Russell, S. M., Appleyard, G., Brand, C. M. & Beale, J. Cross-protection in mice infected with influenza A virus by the respiratory route is correlated with local IgA antibody rather than serum antibody or cytotoxic T cell reactivity. *Eur. J. Immunol.* **14**, 350–356 (1984).
107. Mora, J. R. *et al.* Generation of gut-homing IgA-secreting B cells by intestinal dendritic cells. *Science* **314**, 1157–1160 (2006).
108. Fagarasan, S. & Honjo, T. Intestinal IgA synthesis: regulation of front-line body defences. *Nature Rev. Immunol.* **3**, 63–72 (2003).
109. Brandtzaeg, P. Induction of secretory immunity and memory at mucosal surfaces. *Vaccine* **25**, 5467–5484 (2007).
110. Amiri, P. *et al.* Anti-immunoglobulin E treatment decreases worm burden and egg production in *Schistosoma mansoni*-infected normal and interferon γ knockout mice. *J. Exp. Med.* **180**, 43–51 (1994).
111. King, C. L., Malhotra, I. & Jia, X. *Schistosoma mansoni*: protective immunity in IL-4-deficient mice. *Exp. Parasitol.* **84**, 245–252 (1996).
112. Hogarth, P. J., Folkard, S. G., Taylor, M. J. & Bianco, A. E. Accelerated clearance of *Onchocerca microfilariae* and resistance to reinfection in interleukin-4 gene knockout mice. *Parasite Immunol.* **17**, 653–657 (1995).
113. Brito, C. F., Caldas, I. R., Coura Filho, P., Correa-Oliveira, R. & Oliveira, S. C. CD4⁺ T cells of schistosomiasis naturally resistant individuals living in an endemic area produce interferon- γ and tumour necrosis factor- α in response to the recombinant 14 kDa *Schistosoma mansoni* fatty acid-binding protein. *Scand. J. Immunol.* **51**, 595–601 (2000).
114. Viana, I. R. *et al.* Interferon- γ production by peripheral blood mononuclear cells from residents of an area endemic for *Schistosoma mansoni*. *Trans. R. Soc. Trop. Med. Hyg.* **88**, 466–470 (1994).
115. Tortorella, D., Gewurz, B. E., Furman, M. H., Schust, D. J. & Ploegh, H. L. Viral subversion of the immune system. *Annu. Rev. Immunol.* **18**, 861–926 (2000).
116. Terrazas, C. A., Terrazas, L. I. & Gomez-Garcia, L. Modulation of dendritic cell responses by parasites: a common strategy to survive. *J. Biomed. Biotechnol.* **2010**, 357106 (2010).
117. Thorstenon, K. M. & Khoruts, A. Generation of anergic and potentially immunoregulatory CD25⁺CD4⁺ T cells *in vivo* after induction of peripheral tolerance with intravenous or oral antigen. *J. Immunol.* **167**, 188–195 (2001).
118. Zhang, X., Izikson, L., Liu, L. & Weiner, H. L. Activation of CD25⁺CD4⁺ regulatory T cells by oral antigen administration. *J. Immunol.* **167**, 4245–4253 (2001).
119. Coombes, J. L. *et al.* A functionally specialized population of mucosal CD103⁺ DCs induces Foxp3⁺ regulatory T cells via a TGF- β and retinoic acid-dependent mechanism. *J. Exp. Med.* **204**, 1757–1764 (2007).
120. Sun, J. B., Raghavan, S., Sjolung, A., Lundin, S. & Holmgren, J. Oral tolerance induction with antigen conjugated to cholera toxin B subunit generates both Foxp3⁺CD25⁺ and Foxp3⁺CD25⁻CD4⁺ regulatory T cells. *J. Immunol.* **177**, 7634–7644 (2006).
121. Fontenot, J. D., Gavin, M. A. & Rudensky, A. Y. Foxp3 programs the development and function of CD4⁺CD25⁺ regulatory T cells. *Nature Immunol.* **4**, 330–336 (2003).
122. Sakaguchi, S., Yamaguchi, T., Nomura, T. & Ono, M. Regulatory T cells and immune tolerance. *Cell* **133**, 775–787 (2008).
123. Shevach, E. M. Mechanisms of Foxp3⁺ T regulatory cell-mediated suppression. *Immunity* **30**, 636–645 (2009).
124. Shevach, E. M. From vanilla to 28 flavors: multiple varieties of T regulatory cells. *Immunity* **25**, 195–201 (2006).
125. Mempel, T. R. *et al.* Regulatory T cells reversibly suppress cytotoxic T cell function independent of effector differentiation. *Immunity* **25**, 129–141 (2006).
126. Tsuji, M. *et al.* Preferential generation of follicular B helper T cells from Foxp3⁺ T cells in gut Peyer's patches. *Science* **323**, 1488–1492 (2009).
127. Cong, Y., Feng, T., Fujihashi, K., Schoeb, T. R. & Elson, C. O. A dominant, coordinated T regulatory cell-IgA response to the intestinal microbiota. *Proc. Natl Acad. Sci. USA* **106**, 19256–19261 (2009).
128. Zarembek, K. A. & Godowski, P. J. Tissue expression of human Toll-like receptors and differential regulation of Toll-like receptor mRNAs in leukocytes in response to microbes, their products, and cytokines. *J. Immunol.* **168**, 554–561 (2002).
129. Hammad, H. *et al.* House dust mite allergen induces asthma via Toll-like receptor 4 triggering of airway structural cells. *Nature Med.* **15**, 410–416 (2009).
130. Shearer, J. D., Richards, J. R., Mills, C. D. & Caldwell, M. D. Differential regulation of macrophage arginine metabolism: a proposed role in wound healing. *Am. J. Physiol.* **272**, E181–E190 (1997).
131. Kropf, P. *et al.* Arginase and polyamine synthesis are key factors in the regulation of experimental leishmaniasis *in vivo*. *FASEB J.* **19**, 1000–1002 (2005).
132. Rogers, M. *et al.* Proteophosphoglycans regurgitated by *Leishmania*-infected sand flies target the L-arginine metabolism of host macrophages to promote parasite survival. *PLoS Pathog.* **5**, e1000555 (2009).
133. Davis, J. M. & Ramakrishnan, L. The role of the granuloma in expansion and dissemination of early tuberculous infection. *Cell* **136**, 37–49 (2009).
134. Ullrichs, T. & Kaufmann, S. H. New insights into the function of granulomas in human tuberculosis. *J. Pathol.* **208**, 261–269 (2006).
135. Siciliano, N. A., Skinner, J. A. & Yuk, M. H. *Bordetella bronchiseptica* modulates macrophage phenotype leading to the inhibition of CD4⁺ T cell proliferation and the initiation of a Th17 immune response. *J. Immunol.* **177**, 7131–7138 (2006).

136. Everts, B. *et al.* Omega-1, a glycoprotein secreted by *Schistosoma mansoni* eggs, drives Th2 responses. *J. Exp. Med.* **206**, 1673–1680 (2009).
137. Steinfeldt, S. *et al.* The major component in schistosome eggs responsible for conditioning dendritic cells for Th2 polarization is a T2 ribonuclease (omega-1). *J. Exp. Med.* **206**, 1681–1690 (2009).
138. van der Kleij, D. *et al.* A novel host-parasite lipid cross-talk. Schistosomal lyso-phosphatidylserine activates Toll-like receptor 2 and affects immune polarization. *J. Biol. Chem.* **277**, 48122–48129 (2002).
139. Bergman, M. P. *et al.* *Helicobacter pylori* modulates the T helper cell 1/T helper cell 2 balance through phase-variable interaction between lipopolysaccharide and DC-SIGN. *J. Exp. Med.* **200**, 979–990 (2004).
140. Meade, R. *et al.* Transforming growth factor-beta 1 inhibits murine immediate and delayed type hypersensitivity. *J. Immunol.* **149**, 521–528 (1992).
141. Bommireddy, R. & Doetschman, T. TGF β 1 and T_{reg} cells: alliance for tolerance. *Trends Mol. Med.* **13**, 492–501 (2007).
142. Goetzl, E. J. *et al.* Enhanced delayed-type hypersensitivity and diminished immediate-type hypersensitivity in mice lacking the inducible VPAC₂ receptor for vasoactive intestinal peptide. *Proc. Natl Acad. Sci. USA* **98**, 13854–13859 (2001).
143. Delgado, M., Chorny, A., Gonzalez-Rey, E. & Ganea, D. Vasoactive intestinal peptide generates CD4⁺CD25⁺ regulatory T cells *in vivo*. *J. Leukoc. Biol.* **78**, 1327–1338 (2005).
144. Taylor, A. W., Yee, D. G., Nishida, T. & Namba, K. Neuropeptide regulation of immunity. The immunosuppressive activity of alpha-melanocyte-stimulating hormone (α -MSH). *Ann. NY Acad. Sci.* **917**, 239–247 (2000).
145. Taylor, A. W. Modulation of regulatory T cell immunity by the neuropeptide alpha-melanocyte stimulating hormone. *Cell. Mol. Biol.* **49**, 143–149 (2003).
146. Mazzucchelli, R. *et al.* Development of regulatory T cells requires IL-7R α stimulation by IL-7 or TSLP. *Blood* **112**, 3283–3292 (2008).
147. He, B. *et al.* Intestinal bacteria trigger T cell-independent immunoglobulin A₂ class switching by inducing epithelial-cell secretion of the cytokine APRIL. *Immunity* **26**, 812–826 (2007).
148. Wiedermann, U. *et al.* Vitamin A deficiency increases inflammatory responses. *Scand. J. Immunol.* **44**, 578–584 (1996).
149. Cantorna, M. T., Nashold, F. E. & Hayes, C. E. Vitamin A deficiency results in a priming environment conducive for Th1 cell development. *Eur. J. Immunol.* **25**, 1673–1679 (1995).
150. Kang, S. G., Lim, H. W., Andrisani, O. M., Broxmeyer, H. E. & Kim, C. H. Vitamin A metabolites induce gut-homing FoxP3⁺ regulatory T cells. *J. Immunol.* **179**, 3724–3733 (2007).
151. Sun, C. M. *et al.* Small intestine lamina propria dendritic cells promote *de novo* generation of Foxp3 T reg cells via retinoic acid. *J. Exp. Med.* **204**, 1775–1785 (2007).

Acknowledgements

We thank A. Bendelac, T. Honjo, B. Jabri, Y. Rosenberg, F. Di Rosa, R. Schwartz, N. Singh, the 'ghosts' (K. Abdi, A. Perez-Diez, A. Morgun and N. Shulzhenko) and especially P. Chappert for commenting on the manuscript. T.K. would like to express special thanks to D. Usharauli for his encouragement and support during the preparation of this Essay. We apologize to the authors whose work we didn't cite owing to lack of space. This work was supported by the intramural program of the National Institute of Allergy and Infectious Diseases, National Institutes of Health, Bethesda, Maryland, USA.

Competing interests statement

The authors declare no competing financial interests.